



Hobot 669
instrukcja obsługi

www.epojazdy.pro
kontakt: <https://epojazdy.pro/kontakt>

LEGEE-668/669

Vacuum-Mop 4-in-1 Robot

FastBrush + LEGEE®

User Manual



Winner of Silver Medal at iENA
Germany Exhibition of inventions



◎Important Safety Precautions

Please read all instructions before using.

The device can be used by children aged from 8 and above and persons with reduced physical, sensory or mental capabilities or lack of experience and knowledge if they have been given supervision or instruction concerning use of the device in a safe way and understand the hazards involved. Children shall not play with the device. Cleaning and user maintenance shall not be made by children without supervision.

Warning:

Do not expose LEGEE or its accessories' electronics parts. Should the product become damaged or should it need replacing at any time, all service or repairs must be carried out by an authorized service agent. Please ensure electrical input voltage is compatible with the charging station.

- Clean seven sensors and side brush before use.
- Only fill the water tank with water or diluted LEGEE detergent, other detergents are not allowed.
- Place the cleaning cloth under the device flatly before use.
- Avoid using the device on greasy surface.
- Do not store the device near oil, combustible spray or flammable materials.
- Keep the device in dry and cool place, away from direct sunlight, naked flames, heat, humidity, water and any other liquids.
- Keep electrical cords, hair and curtains away from the device.
- The device can only be used indoor.

◎General Safety Information

- After reading this manual, please keep it in an easily accessible location.
- Follow all instructions and warnings.
- Keep away from strong magnetic fields.
- Keep the device and accessories away from children.
- Product operating temperatures: 0°C ~40°C (32°F ~104°F)
- Product storage temperatures: -10°C ~50°C (14°F ~122°F)

◎ Safety information about power adapter/battery

- Please use the original power adapter that came with the device. Use other types of power adapters will result in malfunction and/or danger.
- Connect the power adapter only to a power source that matches the specifications and make sure the power adapter or the power cord are not trapped under heavy objects.
- Switch off the power and disconnect the power plug before maintenance, do not use if the power adaptor, cord or plug is damaged.
- Allow adequate ventilation around the adapter. Do not cover the power adapter with objects.
- Do not use the adapter in a humid environment. Never handle the adapter with wet hands.
- The power adapter is designed for connection to hazardous electrical voltages. Do not attempt to repair the adapter. Replace the whole unit if it is damaged or exposed to high moisture. Consult local HOBOT dealer for help and maintenance.
- Battery can explode, catch fire, and/or cause burns if disassembled, crushed, cut, punctured, short-circuited, incinerated, recharged (disposable cells), or exposed to water, fire, or temperatures above 60°C (140°F).
- Contact your local waste management authority to follow local disposal regulations and never dispose the product and rechargeable batteries with normal household waste.
- If the device is not in use for a long period of time, store it in a dry and safe location. The battery will need to be charged every 3 months to maintain battery life.

◎ Disclaimer

HOBOT Technology Inc. makes no claims or warranties, either expressed or implied, with respect to the contents hereof and specifically disclaims any warranties, tradability or suitability for any particular purpose. Furthermore, HOBOT Technology Inc. reserves the right to revise this publication and to make changes from time to time in the contents hereof without obligation of this company to provide notification of such revisions or changes.

The user should follow the instructions provided in this user manual, but is ultimately responsible for assessing placement and safety when using this cleaning tool.

©Copyright

Copyright © 2018 by HOBOT® Technology Inc. All rights reserved. No part of this publication may be reproduced, transmitted, transcribed, stored in a retrieval system or translated into any language or computer language, in any form or by any means, electronic, mechanical, magnetic, optical, chemical, manual or otherwise, without the prior written permission of this company.

©Trademarks

All other logos, products, or company names mentioned in this manual may be the registered trademarks or copyrights of their respective companies, and are used for informational purposes only.

©Technical support

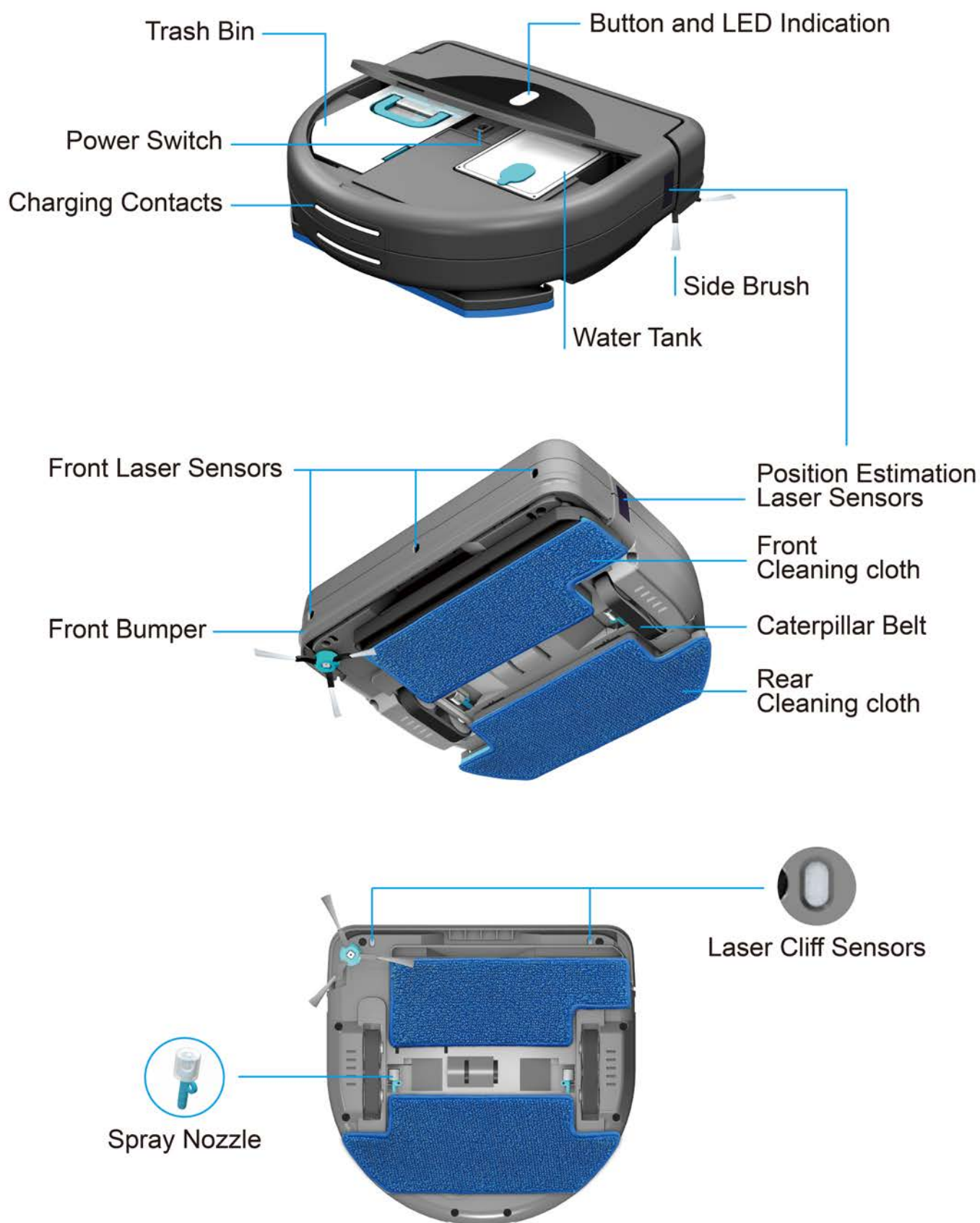
If any problems occur and this manual cannot provide the solution you need, please contact a local retailer or local authorized dealer.

©Limited warranty

If there are defects in your LEGEE due to faulty materials, poor workmanship, or malfunction within the warranty period from the date of purchase or delivery, please contact a local retailer or local authorized dealer for repairs or replacement.

©Not covered by warranty

- Damage caused by improper installation.
- Normal wear and tear (e.g. side brush, cleaning cloth, caterpillar belt, spray nozzle and filter, etc.)
- Reduction in battery runtime due to battery age or use, as the life of the battery (1 year) and number of times the device is used.
- Damage caused by using the device for anything other than normal household purposes.
- Damage caused by using unauthorized parts and accessories.
- Transit, delivery or accidental damage or misuse and abuse that is not in accordance with the instructions.



◎ Specifications

Model No	LEGEE-668	LEGEE-669
Cleaning Method	FastBrush 4-Stage Cleaning	
Mopping Speed	600 times/min.	
Navigation Technology	LEGEE® V1.0	LEGEE® V2.0
Path	Map, Parallel	
Moving Speed	20 cm/sec.	
Vacuum Motor	DC motor	Brushless DC motor
Water Control	Pump Control, Smart Spray	
Water Tank	320 ml	
Side Brush	Stretched out 4 cm from device	
Trash Capacity	500 ml	
Trash Filter	600# Screen Filter + HEPA	
Battery	Li-Po 3000 mAh	Li-Ion 2900 mAh
Working Time	80 mins.	
Cleaning Area Per Charge	150 meter ² (1,614.6 ft ²)	
Object Detection	5 Lasers + Bumper	
Cliff Sensor	2 Lasers	
Charge	Charging Station	
Input Voltage	100~240 V, 50~60 Hz	
Adapter Output	19V/1A, 19W	
Dimensions	340 mm × 330mm × 95mm (LWH) (13.4 in × 13.0 in × 3.7 in)	

◎ Cleaning Cloth Care Instructions








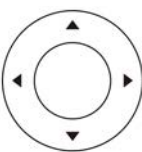


- Washing under 40°C (104°F).
- Do not bleach.
- Do not tumble-dry.
- Do not iron.
- Do not dry clean.



©Product and Accessories

Contents	LEGEE-668/669
Device	1 unit
Charging station	1 unit
AC adapter	1 unit
Remote control	1 unit
Cleaning cloth	2 sets
Spray nozzles	4 pcs
Water bottle	1 unit
Side brush	3 pcs
HEPA filter	3 pcs
User manual	1 unit

©Remote Control

LEGEE-668	LEGEE-669	Action
		Return Home
		Cleaning Mode: Auto
		Cleaning Mode: Spot
		Cleaning Mode: Wall-follow
		Cleaning Mode: Parallel
		Stop Cleaning
		Manually Control
		Dry/Wet Mopping
N/A		Spray Water Once

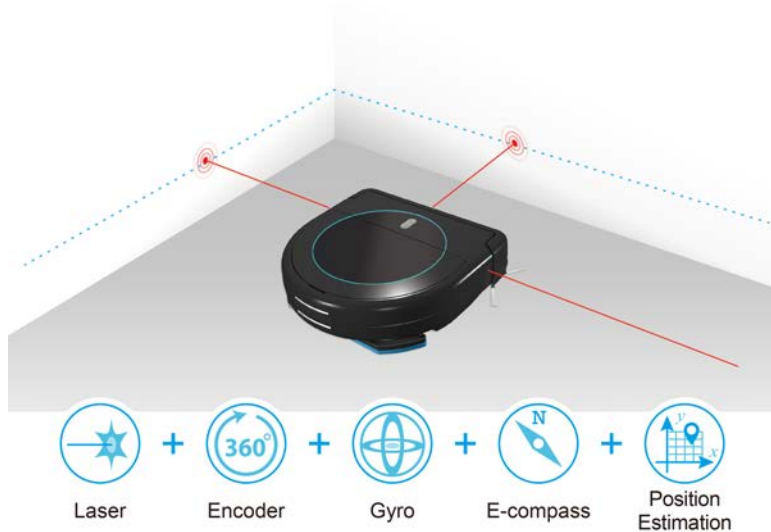
©Exclusive Patent License

FastBrush 4-Stage Cleaning

FastBrush 4-stage cleaning allows LEGEE to complete vacuum, dry mopping, water spray and wet mopping in one take. The powerful vacuum can easily pick up small particles such as dust and hair, then mops the surface with the front cleaning cloth at 600 times/min. which is powered by the reciprocating moving mechanism to imitates the human behavior to remove the stubborn dust off the floor. Followed by the smart water spray that is equipped with temperature sensor that sprays just enough water to dissolve the stains but not leaving the water residue behind. The rear cleaning cloth which also shares the same movement with the front cleaning cloth finally finishes cleaning by absorbing the dissolved stains and polishing the floor.



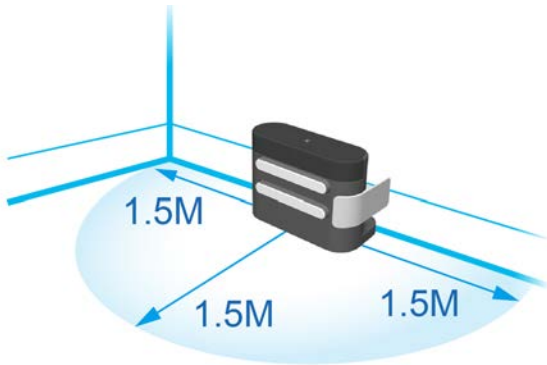
LEGEE® Smart Navigation Technology



LEGEE is the abbreviation of the unique navigation system that integrates Laser, Encoder, Gyro, E-compass and Position Estimation together to detect and measure the surroundings. LEGEE detours around the furniture and other objects while precisely plans the cleaning path to clean the entire floor of your home.

◎Getting Ready to Use LEGEE

1. Install Charging Station



Step 1.

Place the charging station against a wall on hard surface flooring to prevent sliding during docking.

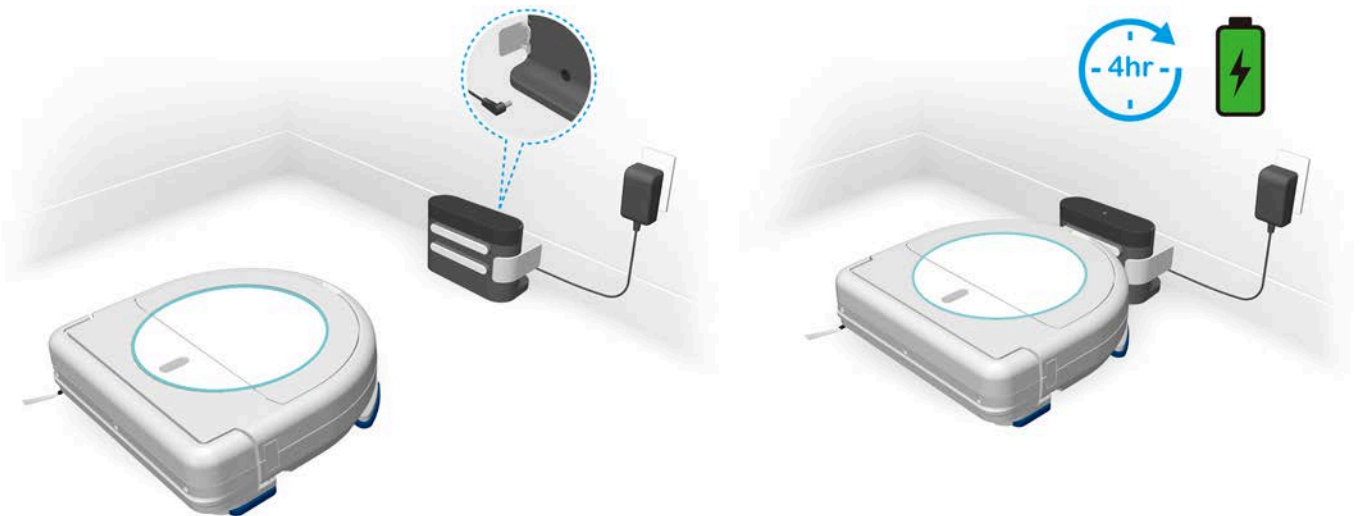
Step 2.

Ensure that there are no objects at least 1.5 meter in front and 1.5 meter to the right and left of the charging station.

2. Charge your LEGEE

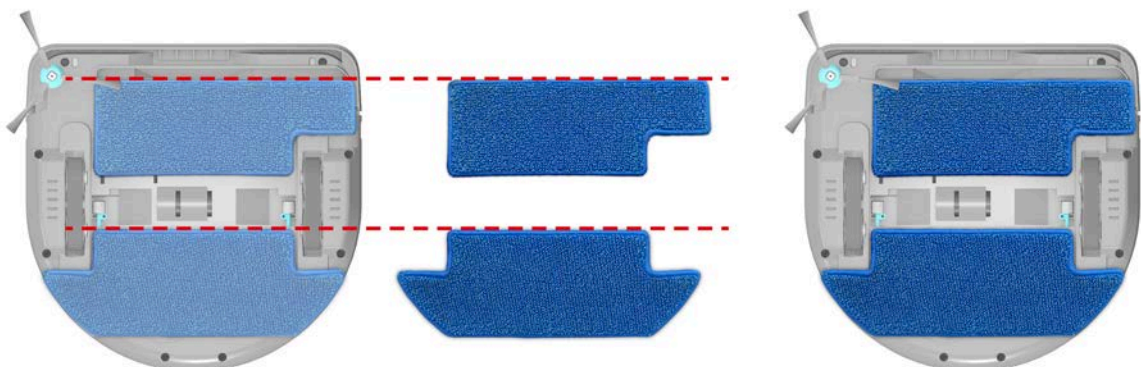
Step 1. Plug power adapter into the charging station.

Step 2. Place the round end of the robot against the metal contacts on the station. Before the first time of use, fully charge the battery for at least 4 hours until green light ON.



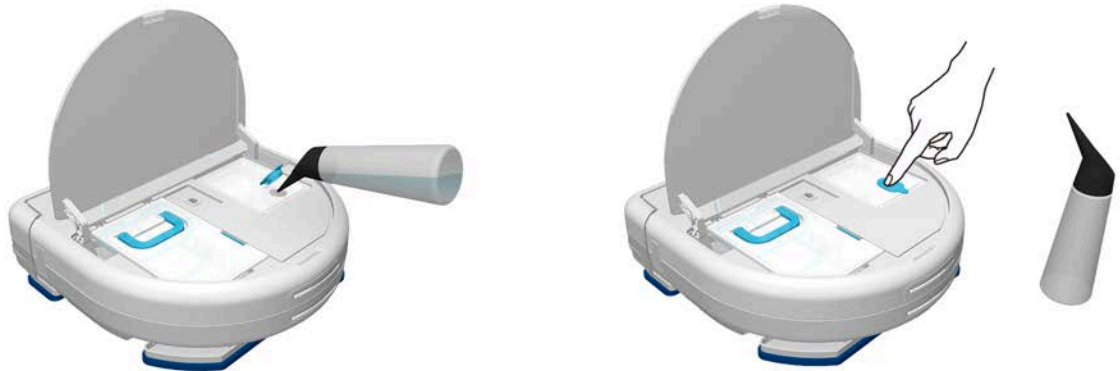
3. Attach / Change Cleaning Cloth

Attach the cleaning cloth to the device flatly. (as indicated by the red line below)




4. Fill Water

Fill water or LEGEE detergent to the water tank by using the supplied bottle and seal the water tank with the plug after filling.

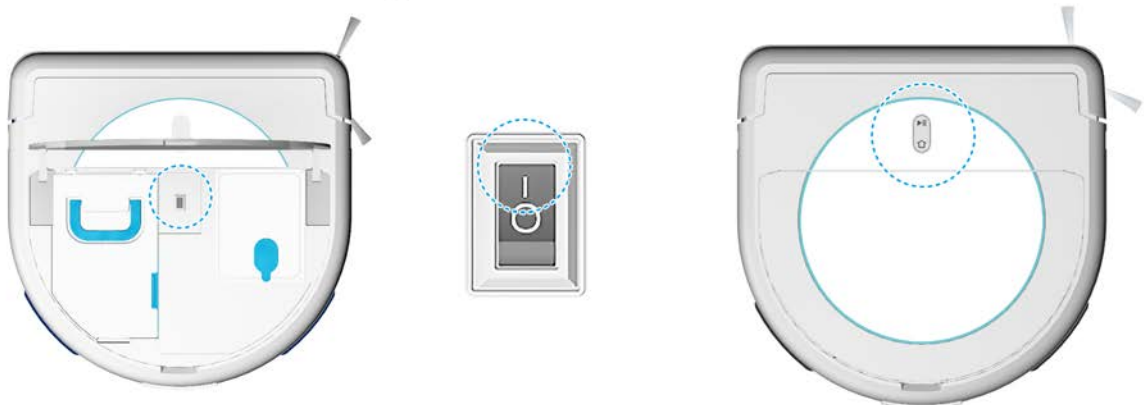


5. Start/Stop Cleaning

Step 1. Start cleaning: Lift open the cover and press down the power switch, then close the cover and press  on the device or on the remote control. (Make the device face to a flat wall if it doesn't start cleaning from the charging station.)

Step 2. Pause cleaning: Press  on the device or remote control.

Step 3. Stop cleaning: Press  on the remote control.



6. Cleaning Tips

In case need to clean a large area or stubborn stains, get the front cleaning cloth wet before attaching to LEGEE for better satisfactory.

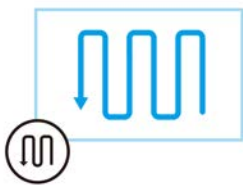
◎Cleaning Process

1. Scan

LEGEE will travel along the wall to “find a straight wall” to set the alignment anchor before starting the cleaning task. If the wall (or the 10cm height wall from the floor) is too dark, LEGEE won't be able to identify it as a straight wall. In case the room is too dark or with too many obstacles, it will take LEGEE few more attempts until it can start the cleaning task.

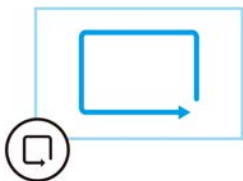
LEGEE will pause for 5 seconds system calibration at the 2nd and 4th minutes after started cleaning.

2. Cleaning Modes



Zigzag Cleaning

LEGEE will travel in zigzag route to clean the floor, when complete, LEGEE will proceed HOME mode.



Wall-Follow Cleaning

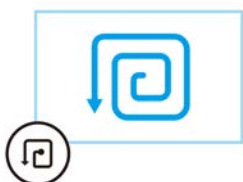
LEGEE will travel along the wall to clean the edge of the floor, when complete, LEGEE will proceed HOME mode.



AUTO Cleaning = Zigzag + Wall-Follow Cleaning

LEGEE 668 will proceed Zigzag Cleaning first, then finish up with Wall-Follow Cleaning mode. To optimize the cleaning coverage in larger spaces, LEGEE 669 will divide the area to 4.8×4.8 meter² and proceed Zigzag Cleaning accordingly, then finish up with Wall-Follow Cleaning mode.

When complete, LEGEE will proceed HOME mode.



SPOT Cleaning

LEGEE travels in square spiral direction counterclockwise from the starting point for 7 rounds, which has about 3×3 meter² coverage.

When LEGEE hits an obstacle during cleaning, it will be identified as LEGEE has reach the wall and the spot cleaning mode will end immediately. If you wish to clean a larger area, please use the auto mode. LEGEE will **NOT** proceed HOME mode after SPOT cleaning mode.

3. Finish Cleaning (HOME mode)

LEGEE will take several seconds to check if it has finished cleaning the entire floor. LEGEE will then travel along the wall for 20~30 cm to look for the charge station. If the charging station couldn't be found, LEGEE will continue travel along the wall to find the charging station. If still can't find after 1 to 2 attempts, LEGEE will stop.

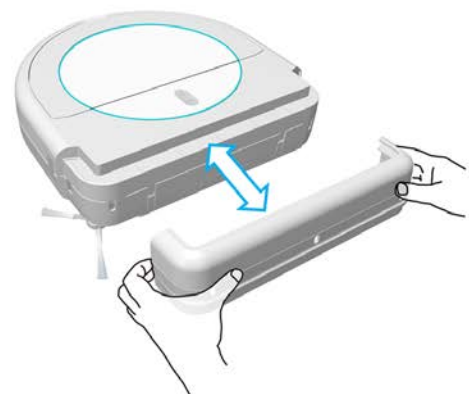
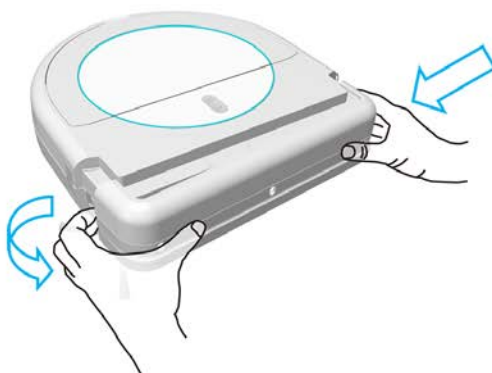
◎LED Indication

Situation	LED Indication
Dry mopping	● Solid
Wet mopping	● Solid
Spraying water	● Flashing
Low battery	● Flashing
Searching for charging station	● Flashing
Battery charging	● Solid
Battery charged full	● Solid
Warning	● Flashing
Hardware failure code (contact your local dealers for help)	● Flashing

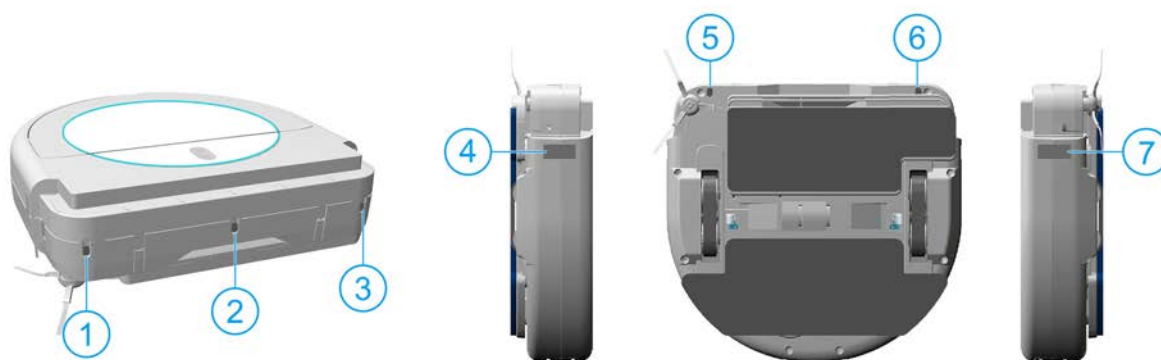
◎Cleaning & Maintenance

1. Clean 7 Laser Sensors

- Press the right side of the bumper and then pull the left side of the bumper out to detached it from LEGEE.

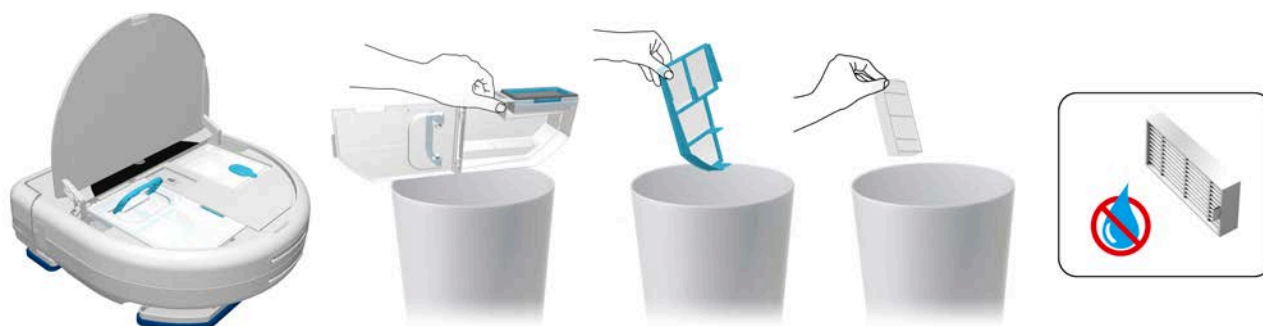


- Use a clean, dry soft cloth or to clean 7 laser sensors. (as indicated in the illustration below)
- Care Frequency: Before each use.



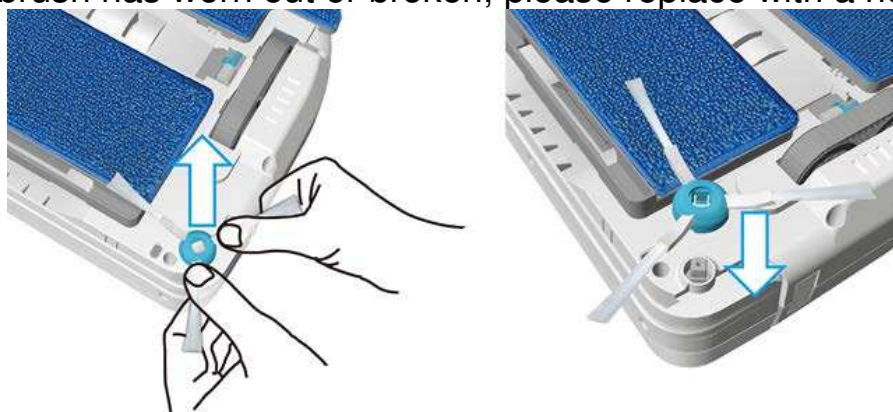
2. Empty Trash Bin & Clean HEPA Filter

- Take out the trash bin by lifting the top handle and open the trash bin to remove the dust.
- Shake off fine dust from the screen and HEPA filter.
- Please replace HEPA if it is too dirty. Never wash HEPA filter.
- Care Frequency: After each use.



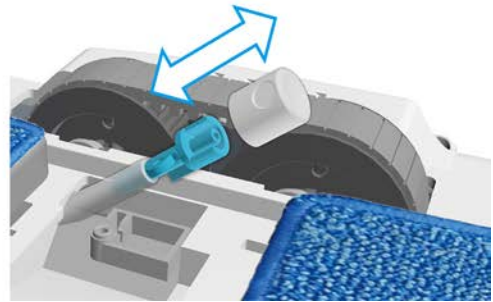
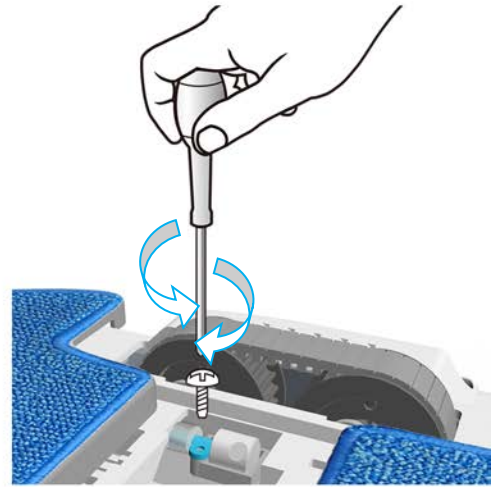
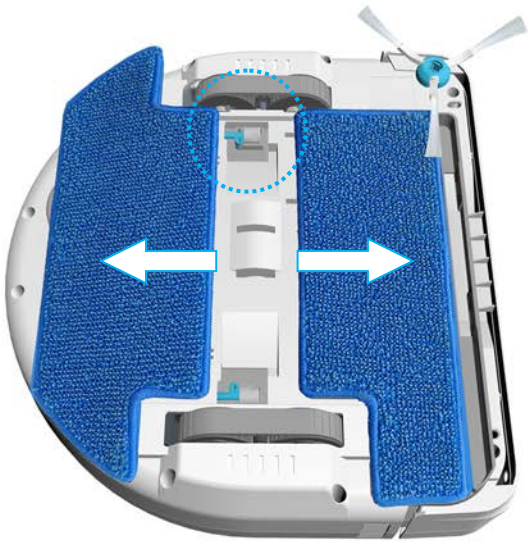
3. Clean & Replace Side Brush

- Pull off the side brush, then gently rub the side brush with warm water to clean the dirt off and restore it to its original shape.
- Reinstall the side brush.
- Care Frequency: After each use.
- If the side brush has worn out or broken, please replace with a new one.






4. Replace Spray Nozzles

- Use small screwdriver to remove the screw and nozzle.
- Clean / remove the nozzle and screw it back.
- Care Frequency: When nozzle is clogged and cannot spray water.



©Frequently Asked Questions (FAQ)

Case	Solution
1. Cannot be switched on	Check if the battery has been charged.
2. Cannot be charged	Check if the adapter is properly connected to the charging station and it has been plugged into the socket.
3. Poor contact with charge contacts	Clean the charging contacts on LEGEE and the charging station with a clean cloth and rubbing alcohol to remove oxide.
4. The cleaning result is less satisfying	Switch off power, then clean or change the side brush, the dust box, HEPA filter and the cleaning cloth.
5. Works/moves abnormally	Switch off power, then clean 7 sensors and check if the bumper is properly installed.
6. The side brush does not spin	Switch off power, then check if the side brush is jammed. Clean the side brush and then reinstall it (Page 13)
7. Does not spray water	Switch on power, then test water spraying function. If LEGEE does not spray water, change the spray nozzles (Page 14)
8. Activate spray testing mode on 668/669	Press  then press  3 times in 1.5 seconds to activate spray testing mode, it will spray water every 5 seconds until press any key on the remote control.
9. Activate spray testing mode on 669	Except the method described in Q8, pressing  on the remote control will make 669 to spray once.
10. The height limit of carpet	LEGEE takes 3 mm height as an obstacle so it will not climb up the carpet.
11. Cannot be activated with remote control	Check if power is switched ON and replace the batteries in the remote control, then aim the remote control to LEGEE's top panel.
12. Increase efficiency of LEGEE work	Remove carpets, cables, and small objects from the floor and roll up the table cloths and curtains.



HOBOT Technology Inc.

www.hobot.com.tw

epojazdy.pro

www.epojazdy.pro

kontakt: <https://epojazdy.pro/kontakt>